

ITU PP-26

Industry Expectations & Strategic Priorities

Bharat B Bhatia

President, ITU-APT Foundation of India ([IAFI](#))

Vice Chairman, Asia Pacific, Wireless World Research Forum ([WWRF](#))

Chairman, ITU-R WP5D WG General on 6G

Chairman, Editorial, APT Prep Group for WRC-27

Chairman, APT Wireless Group on RLAN



9-27 November 2026

Doha, Qatar

➤ Introduction to



- Created in 1865, based in Geneva, 194 Member States, around 1000 private-sector entities and academic institutions
- 13 regional offices, about 700-800 staff
- 3 ITU Sector:
 - ITU-R - Radiocommunications -> *global radio spectrum management and radiocommunication standardization*
 - ITU-T - Standardization -> *standardization of wireline networks, service aspects*
 - ITU-D – Development -> *assistance in the extension of ICTs to all the world's inhabitants, narrowing the digital divide*



What is ITU PP-26?

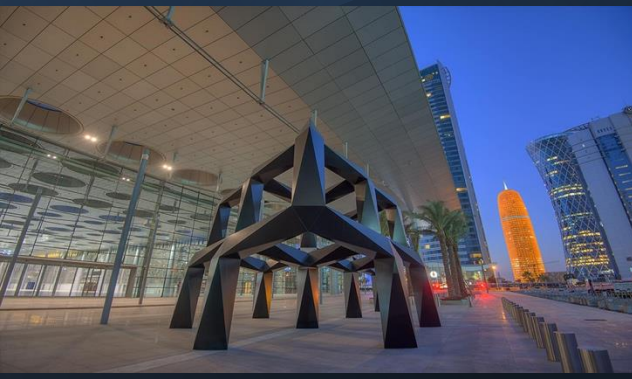
Plenipotentiary Conference held every 4 years

PP-26 will take place in Doha, Qatar, from 9 to 27 November 2026.

Elects ITU leadership for 2027–2030

Sets strategic direction & financial plans

Defines agenda for global telecom standards



Leadership Elections at PP-26

Secretary-General

Deputy Secretary-General

ITU-R, ITU-T, ITU-D Bureau Directors

Radio Regulations Board (12
members)

48 ITU Council members

The **ITU Council member states** serve for the period between two Plenipotentiaries, acting as the **governing body of the ITU** during that time.

India's Goals for Leadership Elections at PP-26

Win the
elections of
Director BR

Win ITU
Council Seat

REVATHI MANNEPALLI
FOR
DIRECTOR, BR ITU 2027-2030



For more details visit

dot.gov.in



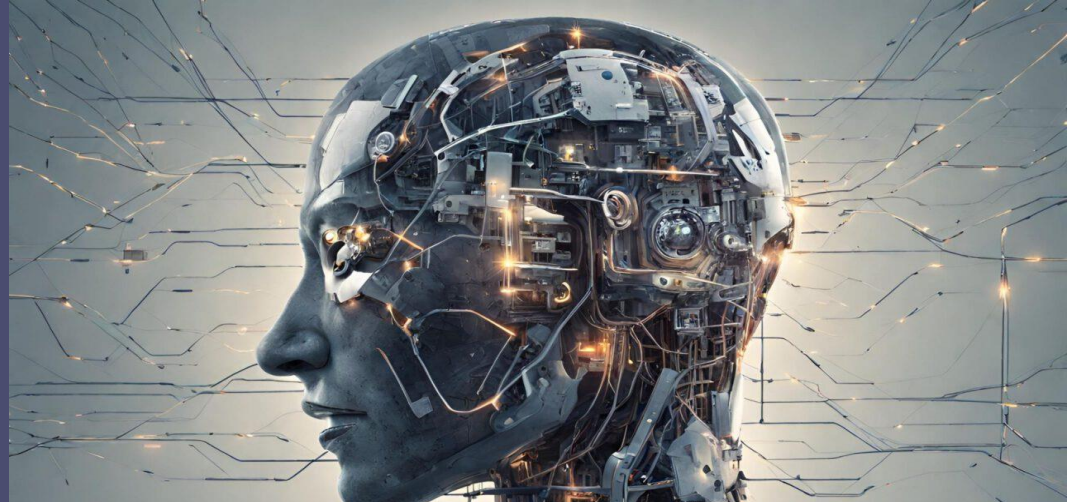
REVATHI MANNEPALLI
Candidate for the post of
Director
Radiocommunication Bureau (BR)
ITU 2027-2030



India Government has nominated Ms. Revathi Mannepalli, Joint Wireless Advisor to contest the election for the post of Director Radiocommunications Bureau, ITU

ITU PP-26 Strategic Priorities

1. Space
2. AI
3. Universal
Connectivity



Space & Satellite Technologies



- Spectrum above 100 GHz



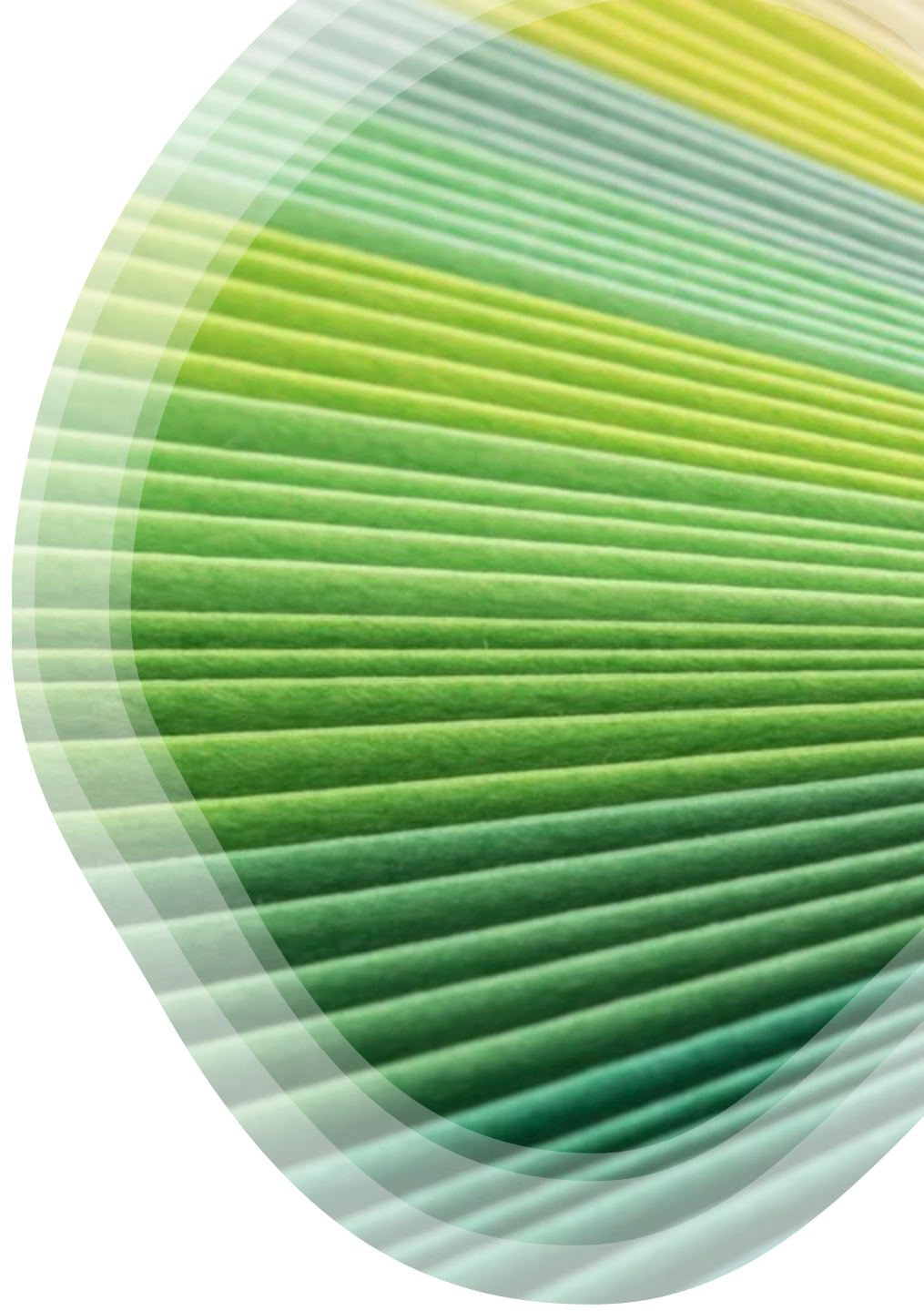
- Integration with 6G / IMT-2030



- Rural & remote connectivity



- Orbit & spectrum coordination



Artificial Intelligence & Innovation

- AI for network & spectrum optimization
- Space computing + AI convergence
- Environmental monitoring
- AI governance & safety



Universal & Meaningful Connectivity

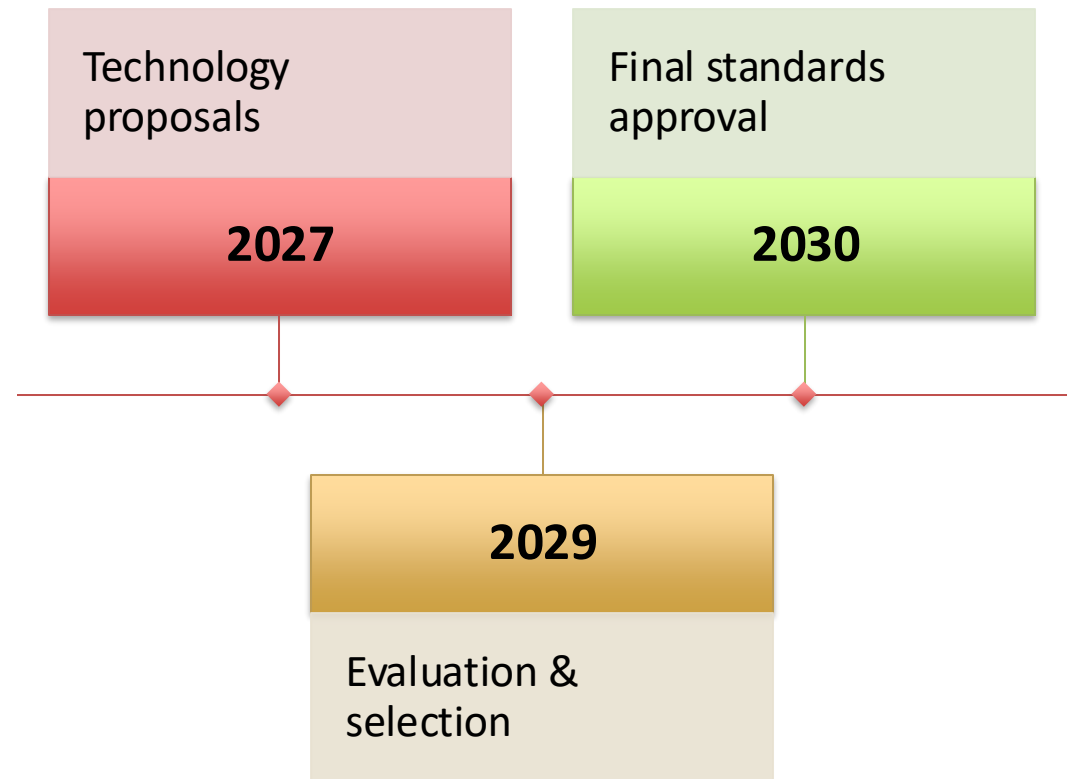
-
- Connecting 2.6 billion unconnected people
-
- Affordable broadband access
-
- Digital literacy & skills
-
- Inclusive regional initiatives



Connect 2030 Strategic Goals

- Growth |
Inclusiveness |
Sustainability |
Innovation |
Partnership

IMT-2030 (6G) Timeline



Spectrum Management Priorities

- Sub-1 GHz: Coverage
- Mid-band (3–8 GHz): Capacity
- mmWave (26–100+ GHz): Ultra-high speed

SDG Alignment & WTDC-25 Outcomes

- Universal & affordable connectivity

- Digital infrastructure for SDGs

- Partnership-based growth

Regional Initiatives (2026– 2029)

- Resilient infrastructure

- Digital skills development

- Sustainable ICT ecosystems

ITU AI &
Space
Computing
Challenge
2026

- AI + space computing

- Climate & food security

- In-orbit deployment for winners

Industry Engagement Pathways

- ITU study groups
- Regional preparatory meetings
- Spectrum & standards contributions
- Engagement via National Regulatory Authorities (NRA)